

International Buffet:ISS - Microsoft Internet Explorer

Address http://international.tamu.edu/iss/ibuffet

## INTERNATIONAL STUDENT SERVICES

### International Buffet

**INFORMATION**

**I-Buffer Home**  
**I-Buffer Team**  
**Mini Talent Show**  
**MSC Facilities**  
**Health Dept. Guidelines**  
**Student Association (Booth Locations)**  
**Student Association (Cooking Schedule)**  
**Cash Advances & Reimbursements**  
**Decoration**  
**Contact Info.**

**FORM**

**Registration Form**  
**Administrator Login**

### International Buffet

**Wednesday, March 2<sup>nd</sup>, 2005 (7:00pm to 10:00pm)**

This is the most anticipated moment of I-week. Another step towards new worlds will be completed by tasting wonderful, simple, and elaborate dishes from all continents especially prepared by the members of the international clubs present at Texas A&M. There will also be a wide variety of live entertainment while feasting.

A representative from each Country Club participating in I-Buffer should be present for each meeting.

Meeting	Date	Agenda
1st Meeting	Thursday February 3, 2005	MSC Room 138, 5:30 PM - 6:45 PM General presentation, distribution of forms Presentation from the first meeting
2nd Meeting	Thursday February 10, 2005	MSC Room 138, 5:30 PM - 6:45 PM *Health Department & MSC Catering
3rd Meeting	Thursday February 17, 2005	MSC Room 138, 5:30 PM - 6:45 PM *MSC Catering
4th Meeting (Tentative)	Thursday February 24, 2005	MSC Room 138, 5:30 PM - 6:45 PM

1

International Buffet:ISS - Microsoft Internet Explorer

Address http://international.tamu.edu/iss/ibuffet/default.asp?pageID=registration

## INTERNATIONAL STUDENT SERVICES

### International Buffet

**INFORMATION**

**I-Buffer Home**  
**I-Buffer Team**  
**Mini Talent Show**  
**MSC Facilities**  
**Health Dept. Guidelines**  
**Student Association (Booth Locations)**  
**Student Association (Cooking Schedule)**  
**Cash Advances & Reimbursements**  
**Decoration**  
**Contact Info.**

**FORM**

**Registration Form**  
**Administrator Login**

### International Buffet

**Login to Complete the Registration Form for International Buffet**

This section can only be completed by the Buffet Coordinators or Club Presidents for the various Associations participating in the International Buffet.

**Register** <<<To open a new account.

E-Mail Address

Password

E-Mail and Password are case-sensitive.

2

International Buffet:ISS - Microsoft Internet Explorer

Address http://international.tamu.edu/iss/ibuffet/default.asp?pageID=registration

## INTERNATIONAL STUDENT SERVICES

### International Buffet

**INFORMATION**

**I-Buffer Home**  
**I-Buffer Team**  
**Mini Talent Show**  
**MSC Facilities**  
**Health Dept. Guidelines**  
**Student Association (Booth Locations)**  
**Student Association (Cooking Schedule)**  
**Cash Advances & Reimbursements**  
**Decoration**  
**Contact Info.**

**FORM**

**Registration Form**  
**Administrator Login**

### International Buffet

**Login to Complete the Registration Form for International Buffet**

This section can only be completed by the Buffet Coordinators for the various Associations participating in the International Buffet.

Please fill your e-mail address out below.

Email Address

3

International Buffet:ISS - Microsoft Internet Explorer

Address http://international.tamu.edu/iss/ibuffet/default.asp?pageID=registration

## INTERNATIONAL STUDENT SERVICES

### International Buffet

**INFORMATION**

**I-Buffer Home**  
**I-Buffer Team**  
**Mini Talent Show**  
**MSC Facilities**  
**Health Dept. Guidelines**  
**Student Association (Booth Locations)**  
**Student Association (Cooking Schedule)**  
**Cash Advances & Reimbursements**  
**Decoration**  
**Contact Info.**

**FORM**

**Registration Form**  
**Administrator Login**

### International Buffet

**Login to Complete the Registration Form for International Buffet**

This section can only be completed by the Buffet Coordinators or Club Presidents for the various Associations participating in the International Buffet.

**Register** <<<To open a new account.

E-Mail Address

Password

E-Mail and Password are case-sensitive.

4

INTERNATIONAL STUDENT SERVICES

International Buffet

INFORMATION Registration Form For International Buffet

I-Buffer Home CLUB INFO. MENU RECIPE BOOTH LOG OUT

I-Buffer Team

Mini Talent Show

MSC Facilities

Health Dept. Guidelines

Student Association (Booth Locations)

Student Association (Cooking Schedule)

Cash Advances & Reimbursements

Decoration

Contact Info.

FORM

Registration Form

Administrator Login

Please provide the details of your participation in International Buffet by filling in the form:

Please click the buttons above to start filling the forms.

\* indicates a required field

5

INTERNATIONAL STUDENT SERVICES

International Buffet

INFORMATION Registration Form For International Buffet

I-Buffer Home CLUB INFO. MENU RECIPE BOOTH LOG OUT

I-Buffer Team

Mini Talent Show Test Club (Felix, Tse)

MSC Facilities Staff: 3 Volunteers: 1 Volunteer: Schedule I: Schedule II: Schedule III:

Health Dept. Guidelines

Student Association (Booth Locations) Your club must have 3 volunteers present on the night of the I-Buffer event (March 2, 2005, from 6:00-10pm). These volunteers will be responsible for preparing your table and serving food throughout the event. Please register your volunteers here.

Student Association (Cooking Schedule) **Volunteers Information**

Cash Advances & Reimbursements The Volunteer information has not been registered, yet.

Decoration You have only 0 volunteer(s). Please enter 3 more.

Contact Info. Last Name : Gates

First Name : Robert

Email : president@tamu.edu

Phone : 979-845-1111

FORM

Registration Form

Administrator Login

Finish Reset

6

INTERNATIONAL STUDENT SERVICES

International Buffet

INFORMATION Registration Form For International Buffet

I-Buffer Home CLUB INFO. MENU RECIPE BOOTH LOG OUT

I-Buffer Team

Mini Talent Show Test Club (Felix, Tse)

MSC Facilities Staff: 3 Volunteers: 1 Volunteer: Schedule I: Schedule II: Schedule III:

Health Dept. Guidelines

Student Association (Booth Locations) Your club must have 3 volunteers present on the night of the I-Buffer event (March 2, 2005, from 6:00-10pm). These volunteers will be responsible for preparing your table and serving food throughout the event. Please register your volunteers here.

Student Association (Cooking Schedule) **Volunteers Information**

Name	E-Mail	Phone
Gates, Robert	president@tamu.edu	979-845-1111 Update

Cash Advances & Reimbursements You have only 1 volunteer(s). Please enter 2 more.

Decoration

Contact Info. Last Name :  
First Name :  
Email :  
Phone :

FORM

Registration Form

Administrator Login

Finish Reset

7

INTERNATIONAL STUDENT SERVICES

International Buffet

INFORMATION Registration Form For International Buffet

I-Buffer Home CLUB INFO. MENU RECIPE BOOTH LOG OUT

I-Buffer Team

Mini Talent Show If you want to use same menu your club was used, please select the year and menu, below.

MSC Facilities YEAR MENU

Health Dept. Guidelines Select

Student Association (Booth Locations) View the menu

Student Association (Cooking Schedule) Name Hamburger

Cash Advances & Reimbursements A brief description this dish: Juicy hamburger patty served with a bun

Decoration For example, what part of the country this dish comes from, if it served on special occasions, etc.

Contact Info. Any additional comments about this dish:

FORM

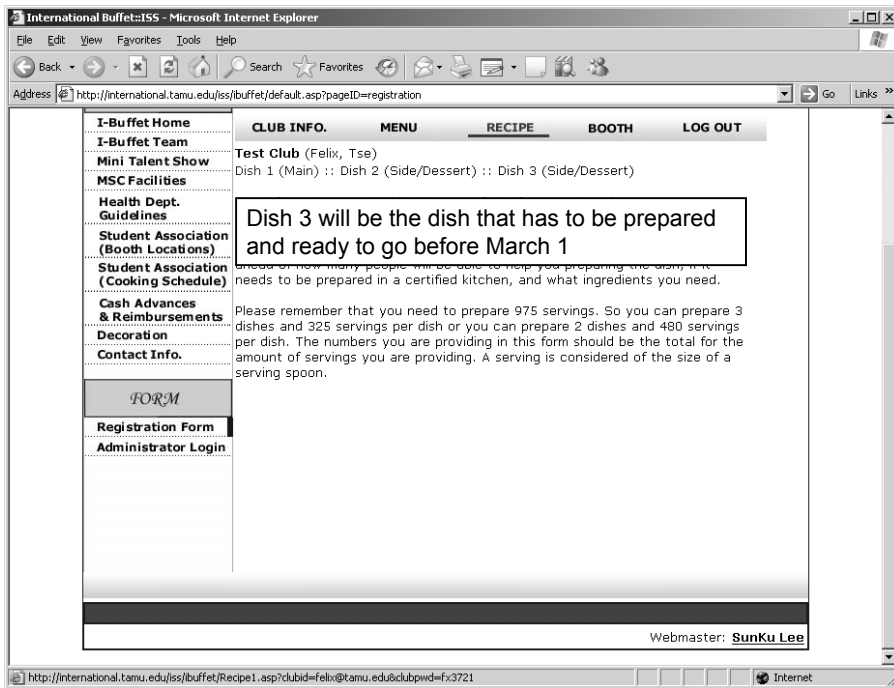
Registration Form

Administrator Login

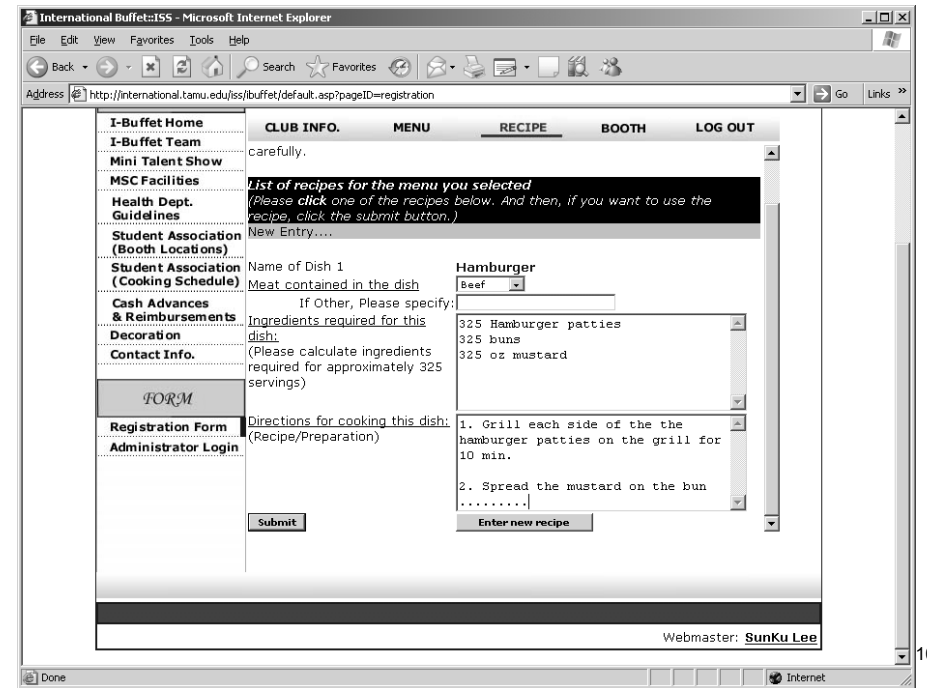
Submit & Go to Dish 2 Enter new menu

Webmaster: SunKu Lee

8



9



10

## Things to enter

- Three volunteers
- Menus
- Recipes